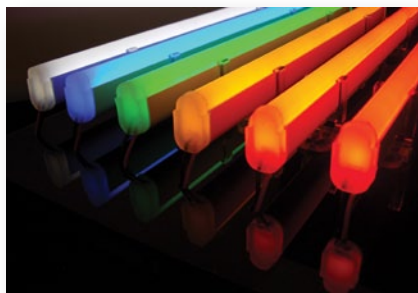


# ColorLINE

## Neon-inspired tubing



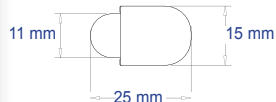
Add stunning neon-like appeal and increased awareness to any building with this patented LED-based rigid tubing system. Completely assembled and sealed tubes are ready for installation. ColorLINE offers our brightest tubing light output, a neon-like profile and innovative lit, mitered corners.

- Slim profile similar to standard neon
- Neutral frosted white colour when non-illuminated
- High impact acrylic: UV stable, hydrocarbon insensitive, non-fading
- Convenient, weatherproof connectors between sections
- Can be cut in the field



### Specifications:

#### Dimensions



Width	11 mm
Base width	15 mm
Height	25 mm
Lengths	0.6 m, 1.2 m, 1.8m, 2.4 m

#### Factory bends

245 mm radius (radial and flat bend)

#### In-field bends

Radial bend	5.8 m
Flat bend	1.8 m

#### Temperature range

-40° C to 70° C

#### Protection class

IP66

#### Supply voltage

DC 12 V

#### Power used per meter

7.5 W

#### Power capacity

7.3 m per 60 W DC 12 V power supply

#### Mounting

Dual-position mounting clips orient in two directions

#### Power supply

SloanLED DC 12 V

#### Colours

Red, Orange, Yellow, Green, Blue, White, Warm White

#### Accessories

Illuminated, Mitered Corners - inside, outside and "step" options

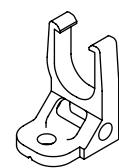
Snap-on, frosted joint covers for clean finish

#### Approvals

UL and cUL recognized, CE Certified



Item Description	Part # Tube	Approx. Cut Increments	Actual Length
0.6 m Tube	701800-Colour -2	60 mm	626 mm
1.2 m Tube	701800-Colour -4	60 mm	1236 mm
1.8 m Tube	701800-Colour -6	60 mm	1846 mm
2.4 m Tube	701800-Colour -8	60 mm	2455 mm



Mounting Clip

Uses SloanLED DC 12 V Power Supply