

FREEZERS

REFRIGERATION



Improve Merchandising
Reduce Maintenance
Save Energy





RDL-Vertical Lighting System

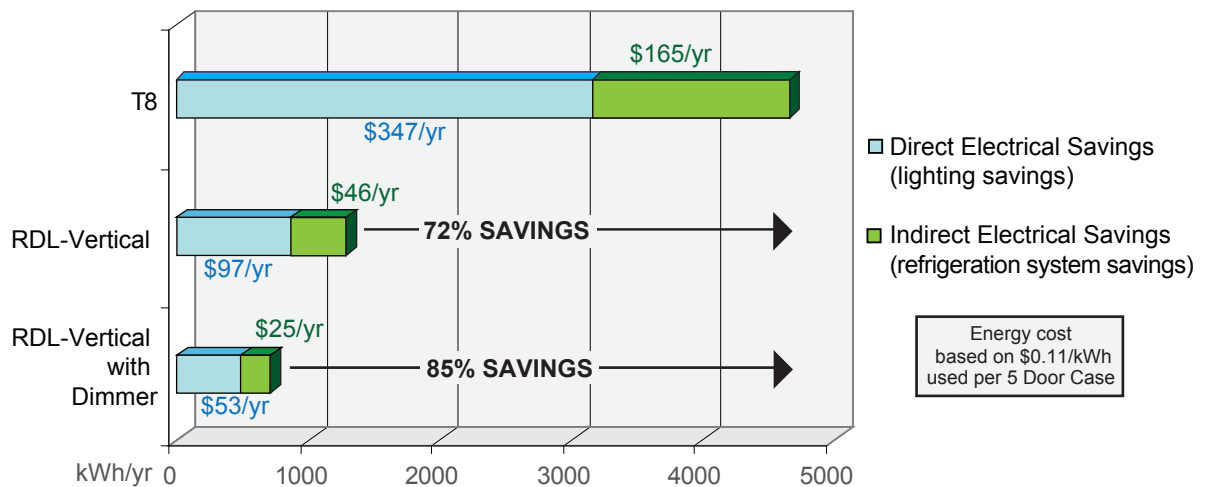
For years refrigeration lighting systems have posed a challenge for retailers to find alternate sources of illumination that will showcase products while reducing energy and maintenance costs. Spurred by recent advancements in LED technology, retailers nationwide have embraced solid state lighting as the future light source for illuminating products in glass-door reach-in refrigeration displays. LEDs are the preferred solution because they perform very well in cold conditions, are easily dimmable and offer an energy efficient solution.

RDL-Vertical lighting system has set new standards for refrigeration lighting. In addition to the superior performance metrics of the product, the RDL-Vertical was designed for ease of install and with durability in mind.

- One power supply for a typical 5-door case
- Fewer components—reduces maintenance liability
- Uniform, glare free illumination
- True white color enhances product visibility
- Up to a 85% total electrical energy savings

RDL-Vertical lighting system offers superior brightness and efficiency, unrivaled robustness, exemplifying high quality and reliability.

Save Energy and Maintenance Cost



RDL lighting system, operating at 20 W per door, reduces the direct lighting energy for a 5-door case by 260 W, and the indirect energy (compressor system savings) by 124 W. That is a 72% savings over standard T8 fluorescent lighting!

Adding the optional RDL-Dimming Control increases savings to as much as 85%!

SloanLED is an ISO 9001 certified manufacturer with over 50 years of lighting excellence. The strict quality control means SloanLED can deliver proven reliability in all their LED solutions.

RDL-Vertical Lighting System

- Bright illumination
- Average 20 W per door
- Non-visible light source
- SloanLED 5-year standard warranty
- Available in nominal 60 and 72 inch lengths
- Additional Merchandising options:
 - MerchandiserMax for maximum illumination 23 W
 - Energy Saver 15 W

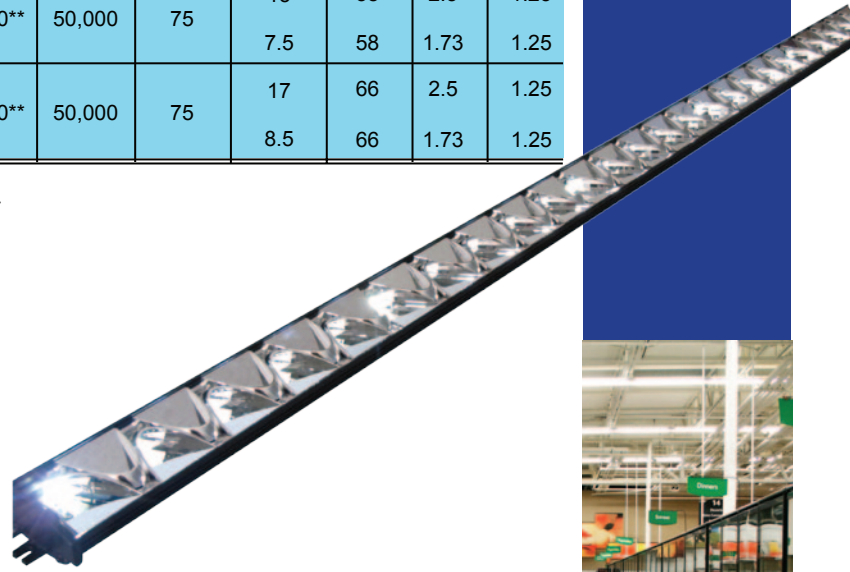
Merchandiser Option

	Item	Part Number	Color Temp (K)	Illuminance*	Life (Hours)	CRI (Nominal)	Power (W)	Length (inch)	Width (inch)	Height (inch)
MerchandiserMax	60 in LED Light Fixture - Ctr	701906-2	3500 4100 5000	1600**	50,000	75	23	58	2.5	1.25
	60 in LED Light Fixture - End	701906-2-END					11.5	58	1.73	1.25
	72 in LED Light Fixture - Ctr	701906-2-66	3500 4100 5000	1600**	50,000	75	26	66	2.5	1.25
	72 in LED Light Fixture - End	701906-2-66-END					13	66	1.73	1.25
Standard	60 in LED Light Fixture - Ctr	701906-2	3500 4100 5000	1400**	50,000	75	.20	58	2.5	1.25
	60 in LED Light Fixture - End	701906-2-END					10	58	1.73	1.25
	72 in LED Light Fixture - Ctr	701906-2-66	3500 4100 5000	1400**	50,000	75	23	66	2.5	1.25
	72 in LED Light Fixture - End	701906-2-66-END					11.5	66	1.73	1.25
Energy Saver	60 in LED Light Fixture - Ctr	701906-2	3500 4100 5000	1050**	50,000	75	15	58	2.5	1.25
	60 in LED Light Fixture - End	701906-2-END					7.5	58	1.73	1.25
	72 in LED Light Fixture - Ctr	701906-2-66	3500 4100 5000	1050**	50,000	75	17	66	2.5	1.25
	72 in LED Light Fixture - End	701906-2-66-END					8.5	66	1.73	1.25

Note:
 SloanLED lists AC wattage to make estimating your energy output easier
 * Initial Illuminance +/- 15% based on in-store performance
 ** Measured at center of door

RDL-Dimming Control

Optional dimming control may increase total energy savings up to an additional 47% and extend standard LED Lumen depreciation from 50,000 hours to over 90,000 hours.*



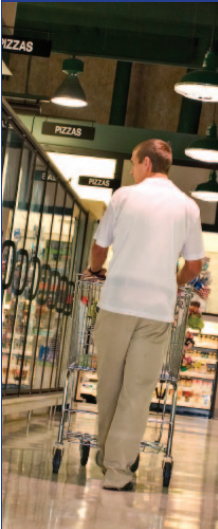
*Based on independent utility studies

RDL-Power Supply

RDL's low system power requires only a single power supply for a 5-door case/cooler, with efficiency >89%. UL, CE, TUV approved



RDL-Vertical Lighting System Saves You Money



	Feature	Metrics	T8 Fluorescent	RDL-Vertical Lighting System	RDL with Dimming System
Merchandising	Improved Visual Merchandising	Center of shelf (LUX)	600-800	1,400*	1,400*
		Distribution of light (Range / Mean) Uniformity of light	Not uniform (0.87) Medium	Uniform (0.22) High	Uniform (0.22) High
	Product Focus	Visibility of light source	Visible	Concealed	Concealed
Sustainability	Energy Savings based on a 5 door case	Power consumption 5 door case / W (AC)	360 W	100 W	55 W
		Refrigeration power consumption/ W (AC)	171 W	47	26
		% of Savings	N/A	72%	85%
		Annual reduction in energy/carbon foot print	0	3,364 kWh 1447 kg CO ₂	3,940 kWh 1694 kg CO ₂
	Cost of Ownership 5 door case/ @ \$0.11/kWh	Annual maintenance cost	~\$20- \$50/door	~\$0/ door/	~\$0/ door/
Total annual energy cost (direct/indirect)		\$512	\$143	\$78	
Total Annual Savings		\$0	\$389 - \$419	\$454 - \$484	

*Initial illuminance +/-15% based on in-store performance

Energy Resources and Incentive Programs

Resources

- Tax incentives for buildings - www.energytaxincentives.org
- Commercial building provisions - www.efficientbuildings.org
- U.S. Department of Energy - <http://www.energycodes.gov/>

Incentive Programs

- DSIRE - Database of State Incentives for Renewables and Efficiency - www.dsireusa.org

We can all make a difference



- Reuse
- Recycle
- Reduce
- Rethink - **Retrofit**

SloanLED is an
Energy Star Partner



5725 Olivas Park Drive
Ventura, CA 93003
Toll-free: 888.747.4LED
Tel: +1 805.676.3200
www.SloanLED.com



Trade names, marks and logos shown are the property of their respective owners.
Specification may change without notice. © 2012 SloanLED #00080 REV. B
2KV3